




Hydrapanel

Installation and specification guide

Version 4.6 August 2022



Contents	
Page 3	Product Description
Page 4	Typical Uses
Page 5	NZBC compliances
Page 6	Hydrapanel Panel List
Page 7	Hydrapanel Jointer List
Page 8	Scope, Timber Framing, Lined Walls, Shower Linings
Page 9	Materials required, Tools required, Preparation
Page 10	Installation Process
	Aluminium jointers
Page 11	FlushFIT jointers, Silicon joints
Page 12	Installation detail, Wall joints
Page 13	Jointing details
	Aluminium Panel joint, FlushFIT joint
Page 14	Silicon joint, External Corner
Page 15	Internal Corner, End Cap
Page 16	Ceiling and Floor
Page 17	Vinyl Floor and Shower tray
Page 18	Wet Areas floor coverings, fixture and fittings
Page 19	Shower Trays and Unenclosed Showers
Page 20	Splashbacks
Page 21	Maintenance, Storage, Packaging
Page 22	Technical Specifications, Warranty
Page 23	Notes



In order to deliver the best
we have teamed with the
best

Hydrapanel is available
exclusively from Bunnings,
get hold of your rep or ask
for it in-store

Hydrapanel is a non-structural wall and ceiling panel lining that is impervious to moisture and resistant to water, steam, abrasion and typical cleaning materials.

Intended primarily for use in wet areas such as bathrooms and kitchens. Intended also for use in food preparation areas, where the code and health regulations require an impervious surface that will withstand water and chemicals, that is easily maintained and cleaned and are capable of withstanding high use hygienic cleaning.

The panels are also to be used as a decorative pre-finished lining that can withstand high use and require low maintenance

The panels can be fixed to timber and steel framing are to be fixed in accordance with NZS 3604 Light timber framed buildings and must not be fixed to framing that exceeds moisture content as per NZS 3602.

Hydrapanel Lining systems consist of a range of pre-finished high-pressure decorative laminate panels and jointing accessories.

Hydrapanel lining systems are suitable for use in wet and dry areas, that require an impervious surface that is sealed and easy to clean and maintain.

Hydrapanel lining systems are also suitable for areas that require protection from dirt and germs and can also be used in areas that require strict hygiene, such as food processing and preparation areas

Hydrapanel Lining is a magnesium fireproof board, laminated face and back with High Pressure Laminate as a sandwich construction.

Hydrapanel lining systems can be installed with either proprietary aluminium track or flush fit jointer systems

The panels are produced as standard with Gloss white on one side and Matt white on the other, allowing for a choice of finish on the one panel.

Special colours and finishes can be produced on request.



Typical uses

- Pre finished wall and ceiling panels
- Bathrooms
- Showers
- Laundries
- Toilet
- Kitchens
- Kitchen Splashbacks
- Utility Rooms
- Garages
- Retail fit outs
- Cabinetry panels
- Sliding doors
- Display Panels
- Shop Linings
- Food preparation
- Restaurants
- Commercial kitchens
- Industrial and public showers and wet areas

NZBC AS/NZS 2908

B1 – STRUCTURE

Hydrapanel Lining complies with the requirements of B1.3.2, Acceptable solution B1/AS1 Table 1, Shower Linings

B2 – DURABILITY

Hydrapanel Lining are manufactured in accordance with Clause B2 - B2.3.1(b) 15 years, B2.3(c) 5 years - Acceptable solution B2/AS1, Table 1

C3 – FIRE PERFORMANCE

Hydrapanel Lining have a fire classification of group 2 in accordance with ISO5660 and must be used only where the surface requirements of Acceptable Solution C3/AS1 Table 4.

There are no restrictions on use within detached dwellings, within household units in multi-unit buildings, or outbuildings and ancillary buildings.

E3 – INTERNAL MOISTURE

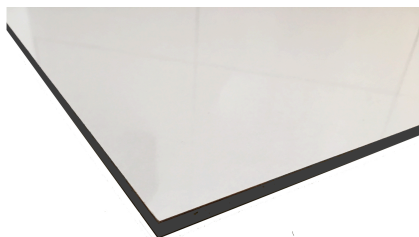
Hydrapanel Lining complies with the requirements of Clause E3 – section 3.1.2
Acceptable Solution E3/AS1 - section 3.1.2 (g), section 3.3.4, 3.3.5, 3.3.6

G3 – FOOD PREPARATION AND PREVENTION OF CONTAMINATION

Hydrapanel Lining complies with the requirements of Clause G3 – G3.3.2 (a)
Acceptable solution G3/AS1 section 1.6, section 2.1.5 / 2.2.3



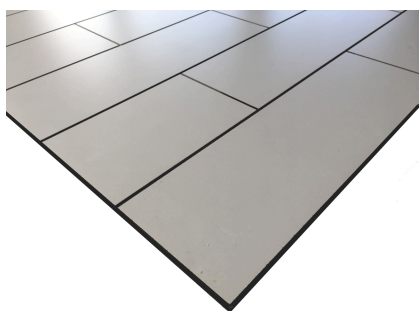
Hydrapanel Range



Hydrapanel Flushfit

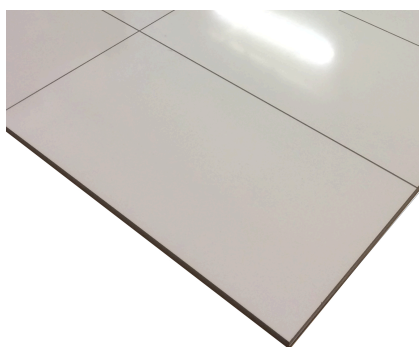
2400 x 1200 x 7.6mm SKU 8908542

3000 x 1200 7.6mm SKU 8905140



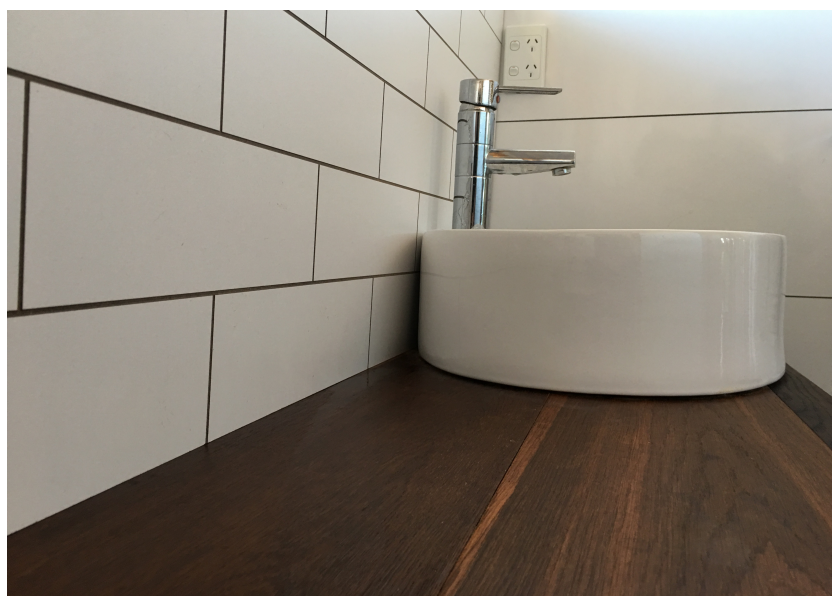
Hydrapanel SUBWAY TILE 300 X 100 pattern

2400 x 1200 x 7.6mm SKU 8911282

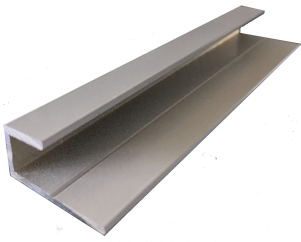


Hydrapanel TILE 600 x 300 pattern

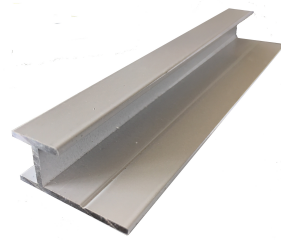
2400 x 1200 x 7.6mm SKU 8906752



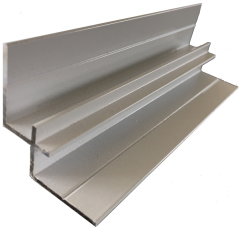
Hydrapanel Joints



End Cap
2400 SKU 271535
3000 SKU 8905142



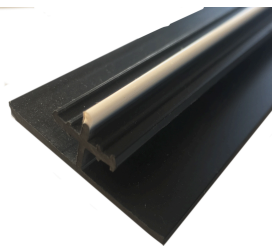
Panel Joints
2400 SKU 271553
3000 SKU 8905150



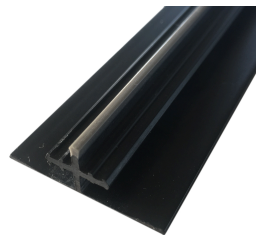
Internal Corner
2400 SKU 271550
3000 SKU 8905147



External Corner
2400 SKU 271545
3000 SKU 8905145



Flushfit Joints White edge
2400 SKU 8908532
3000 SKU 8908537



Flushfit Joints Grey edge
2400 SKU 8908535

Scope

Hydrapanel Lining products can be fixed directly to Steel and also timber frame constructions.

Timber Framing

Studs must be placed at 600mm maximum centres for 1200 wide sheets and 450 wide centres for 900 wide sheets, with nogs and top and bottom plates at 1200mm maximum centres.

Timber support faces must be straight, flush, in alignment and the bonded surfaces must be dry and clean.

Moisture content of support surfaces must be less than 18% moisture content and must be in accordance with NZS 3604.

Hydrapanel Lining products can be affixed directly to existing wall linings such as plasterboard.

Stainless steel screws and fixings must be used when fixing through Hydrapanel.

Lined Walls

Surfaces, such as plasterboard must be flat, sound and suitably fixed

Concrete, Masonry or brick walls and ceilings

Ensure concrete, masonry is dry and seal if necessary

Panels may be fixed directly to existing linings provided the linings are structurally sound

Timber battens, if required must be fixed as follows;

For 1200mm panels, battens are spaced horizontally and vertically at 600mm centres

For 900mm panels, battens are spaced horizontally at 600mm and vertically at 450 centres

For ceilings, battens are spaced at 400mm centres

Battens / strapping must have DPC between the timber and concrete surface

Shower linings

Old shower linings must be removed, framing and plumbing must be inspected to ensure items are fit for covering

Tools Required (suggested minimum)

- Cartridge Gun
- Tape measure
- Sharp blade knife
- Hand Saw or power saw (jigsaw and circular saw)
- Battery or power drill
- Level
- Sanding block

Preparation

- Check all walls and ceiling and floor intersections are square
- Check substrate / framing is dry, all timber and sheet surfaces are clean and free of contaminants
- Check framing is straight, flat and level across the face surface
- Measure and mark sheet positions to centres of corresponding framing, if using jointers allow tolerances of 2mm for the panels to fit easily between
- We recommend using full sheets in the centre and cut sheets at wall junctions

Cut and prepare sheets

- Measure panel sizes from top and bottom of the wall to determine panel width
- Using a straight edge, cut the panels to suit, using either a table saw, circular saw, hand saw or router
- Remove the protective plastic film 60mm from each edge, DO NOT remove all of the film until the panels are completely installed.
- Remove the plastic protection from the back side of the sheet if fitted
- Smooth finish the edges of the sheets with a planer or a block with 200 grit sandpaper
- Mark and cut out for penetrations
- **Seal edges of all penetrations with silicon sealant**



Installation using adhesive with standard aluminium or plastic jointers

Option 1 – Aluminium Jointers

- Ensure that you have a clean and prepared surface to work with.
- Wipe down the timber/steel framing that you are going to overlay with Cleaner. Ensure that you use plenty of clean lint free cloths.
- Wait for Cleaner to completely dry.
- Fix the first jointer to the stud – screw or pin (see tip below)
- Fix second jointer to Right hand side of first sheet
- Use sealant in jointers if using in wet areas
- Apply a continuous bead of Armour Flex FC Adhesive 5mm x 5mm (positioned approx 25mm from the edge of the Hydrapanel Double Sided Tape if this is used).
- Wipe down the corresponding reverse side of the Hydrapanel Lining (that surface that is going against the timber/steel framing or wall) with Cleaner.
- Fit the edge of the sheet into the jointer and press the panel against the adhesive on the framing whilst packing the sheet of the floor / base with 10mm packers.
- Roll or press firmly over all areas of the Framing or Wall to ensure that the adhesive is compressed to a point where the Hydrapanel™ is in full contact with the adhesive.
- Screw or nail the jointer attached to the sheet to the corresponding timber frame.
- Repeat this process until finished.
- Leave finished Hydrapanel™ lined a full 24hours for the adhesive to cure before carrying out further work in the area/room being lined with Hydrapanel™
- Apply silicone sealant to all penetration edges after sheets have been fixed
- Remove masking tape whilst the silicone is still wet. (do not touch the silicone with skin as this can promote mould growth)
- When installing in a 3 sided shower, fix the centre sheet with jointers attached to both sides of the sheet
- Leave finished Hydrapanel™ lined a full 24hours for the adhesive to cure before carrying out further work in the area/room being lined with Hydrapanel™
- Double sided tape can also be used to hold the sheets in place while the glue dries please note however that the use of tape will not allow the panel to be moved or slid into position, care must be taken if using tape that the panel is in position before it is pressed to the wall / stud.

- **HANDY TIP** – When screw fixing aluminium jointers, use 6 g x 30mm screws / pilot drill hole with 1/4inch drill bit, this will allow the 6 gauge screw to countersink and sit flush with the aluminium edge.

Option Two – Flushfit Joints

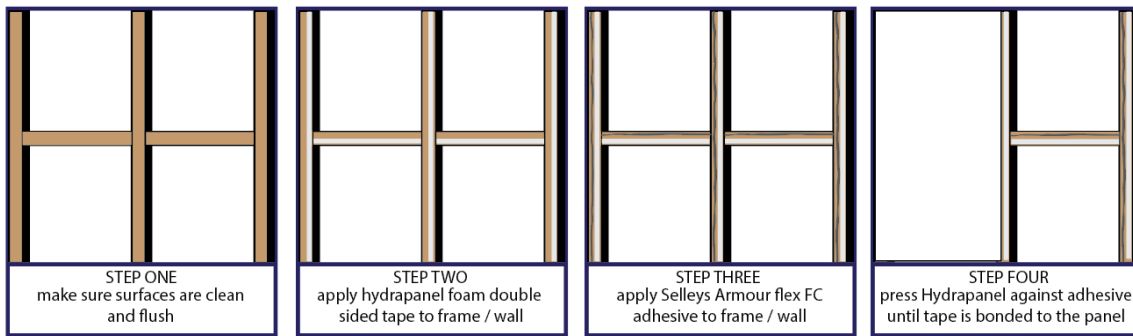
- Hydrapanel has a 2mm grooved edge on the long edges to take a flushfit jointer section
- This allows the panels to be installed with a flush 2mm PVC gap between each sheet
- The jointer has a soft PVC edge that bridges the gap
- This gap can also be left as a negative detail or can be filled with a flexible sealant / silicon to fill the joint by removing the soft PVC edge on the flushfit jointer
- Refer to instruction 7.6 below for instructions on how to fill the gap if required
- For installation of Hydrapanel ;
- Repeat steps 7.5 for external jointers

Installation using adhesive and silicone joints

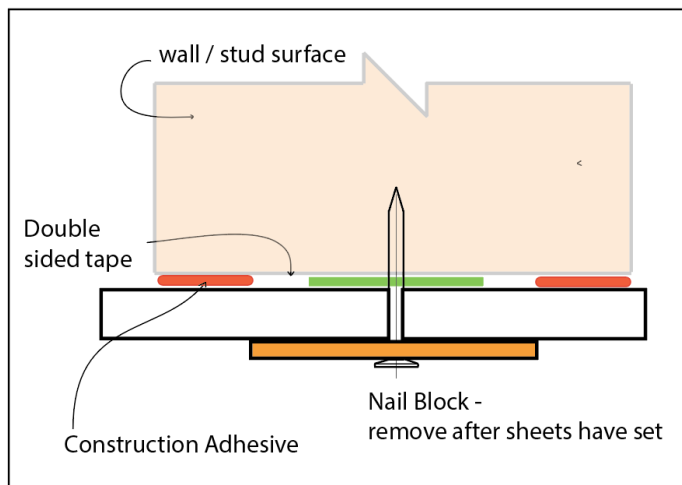
- Remove the plastic protection from the back side of the sheet if fitted
- Position Hydrapanel Foam Double Sided Tape to stud in centre position of the panel (refer detail 1)
- Apply a continuous bead of ArmourFlex FC Adhesive 5mm x 5mm to framing (positioned approx 25mm from the edge of the Double Sided Tape). (refer detail 1)
- Wipe down the corresponding reverse side position of the Hydrapanel Lining (that surface that is going against the timber/steel framing or wall) with Cleaner.
- Roll or press firmly over all areas of the Framing or Wall to ensure that the adhesive is compressed to a point where the Hydrapanel™ is in full contact with the Double Sided Tape, whilst packing the sheet of the floor / base with 10mm packers.
- Position corresponding sheets with a continuous joint of 2 - 4mm depending on gap specification
- Hold sheets in place with Nail blocks (refer detail 2)
- Prop sheets if required
- Repeat this process until finished
- Leave finished Hydrapanel™ lined a full 24hours for the adhesive to cure before carrying out further work in the area/room being lined with Hydrapanel™
- Once adhesive has cured, remove nail blocks
- Remove 60mm of the protective film from each edge of the panels
- Apply masking tape to the panel edges and apply silicone sealant to the gap between the panels
- Apply silicone sealant to all penetration edges after sheets have been fixed
- Remove masking tape whilst the silicone is still wet. (do not touch the silicone with skin as this can promote mould growth)

Installation steps

Detail 1



Detail 2 - Hold sheets in place with nail block until glue is s

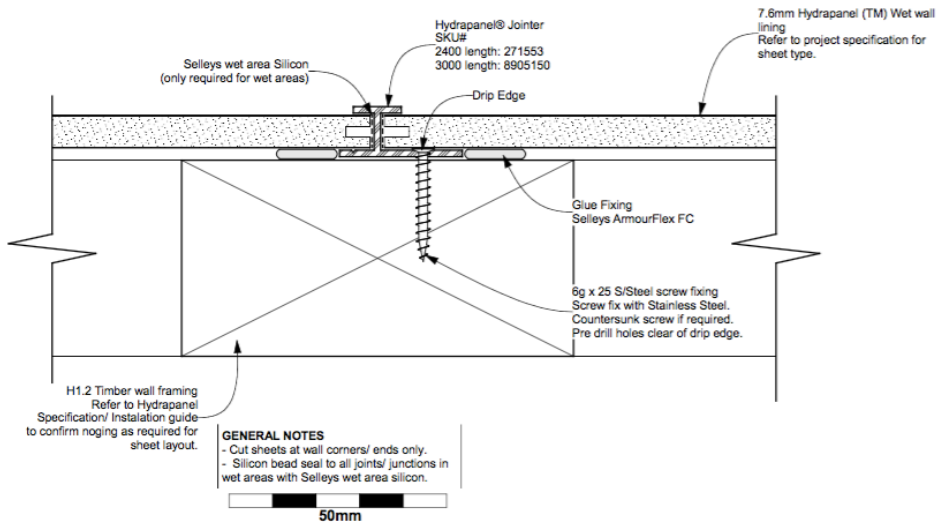


WALL JOINTS

Cut vertical jointers to fit as required - all horizontal jointers should be full length

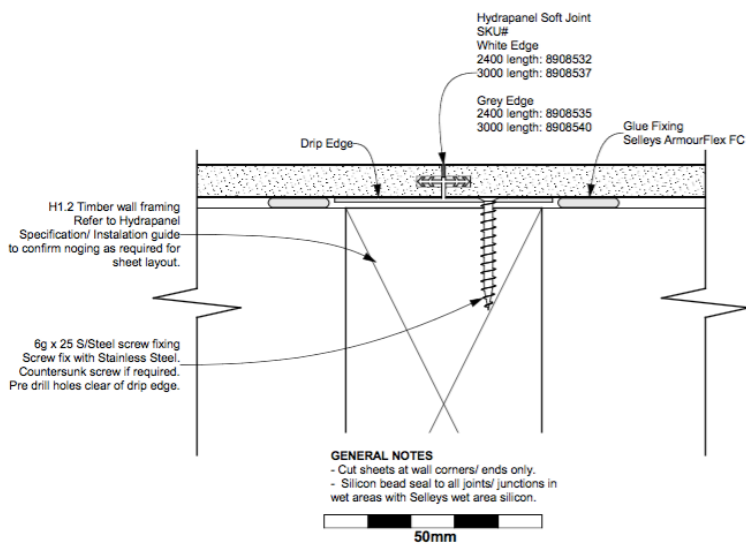
Wet Area jointers - for showers and wet areas all jointers including corners and caps must be filled with flexible silicone sealants.

Typical examples of wall, floor and ceiling junctions are as follows;



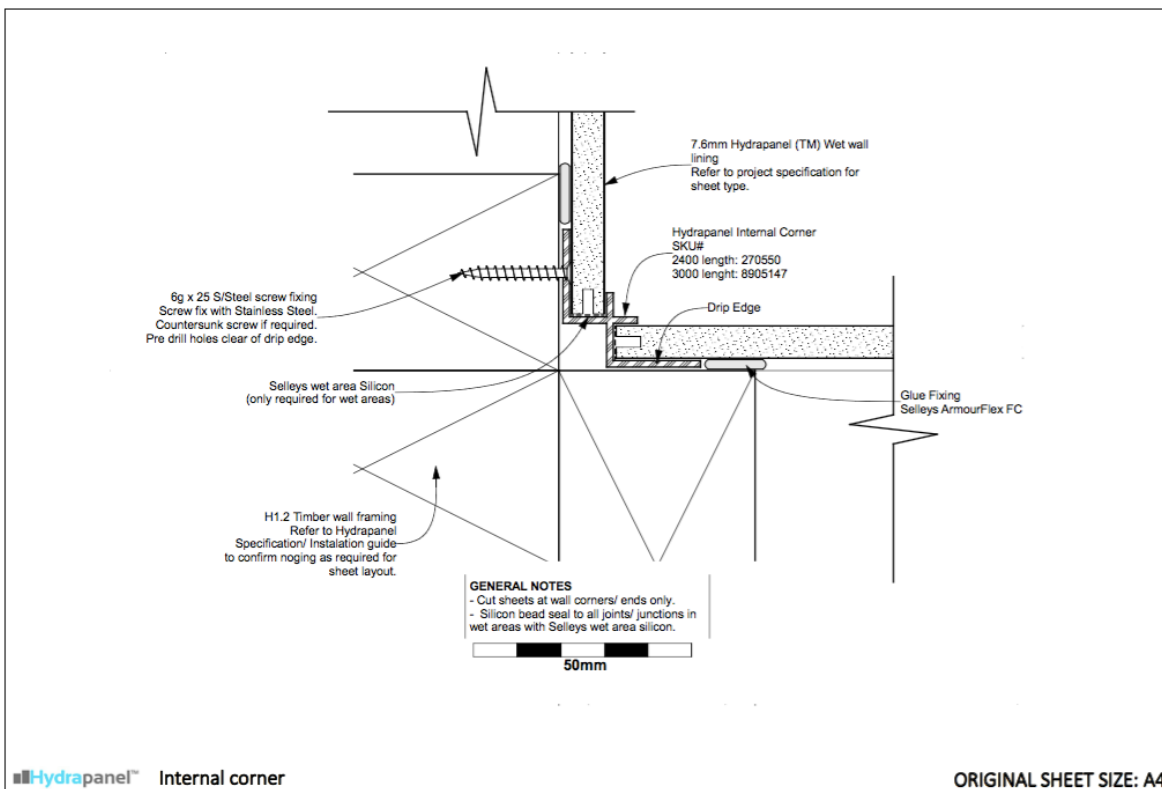
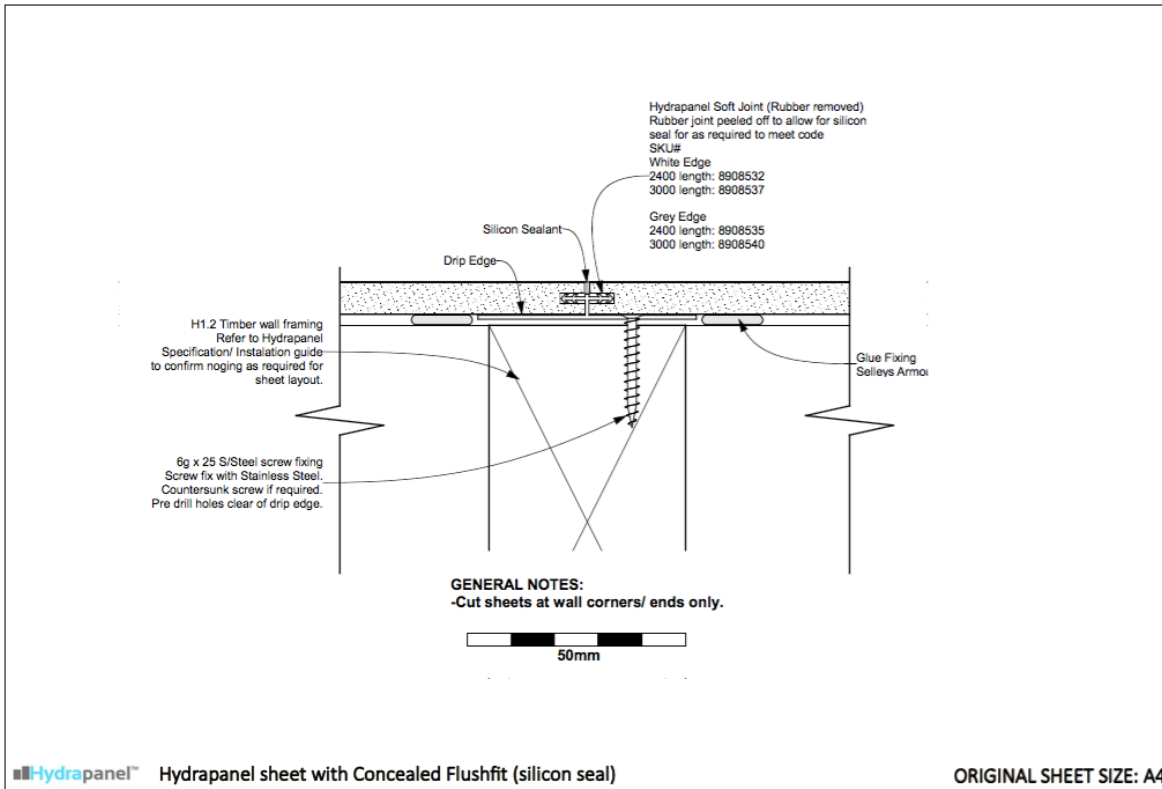
Hydrapanel™ Hydrapanel sheet Joint with Extrusion

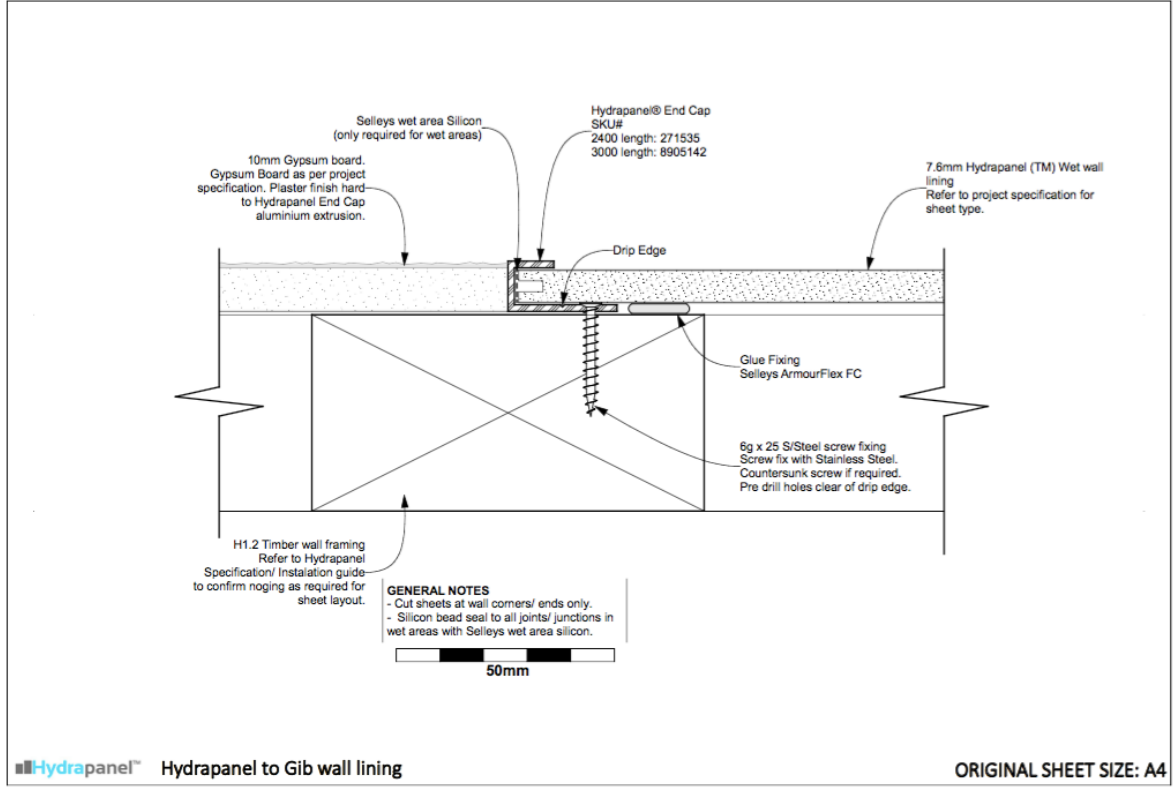
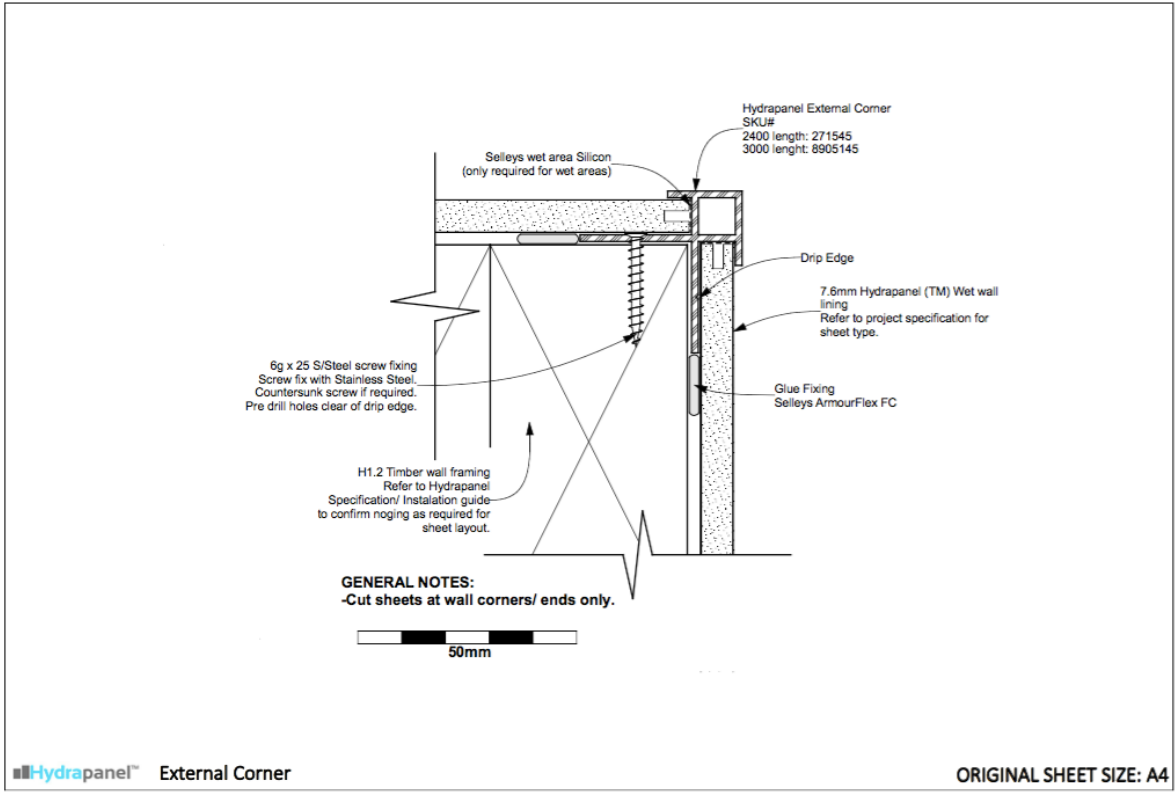
ORIGINAL SHEET SIZE: A4

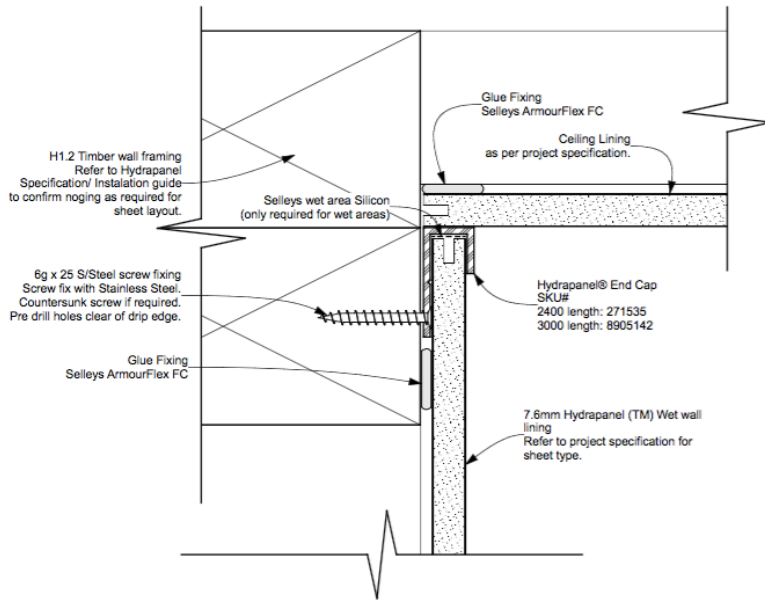


Hydrapanel™ Hydrapanel sheet with Flushfit Jointer

ORIGINAL SHEET SIZE: A4

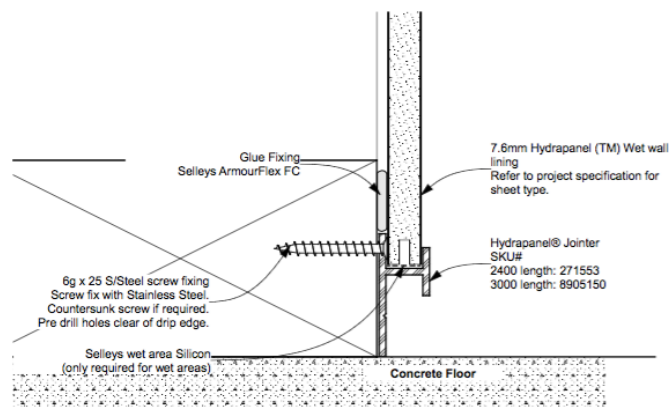






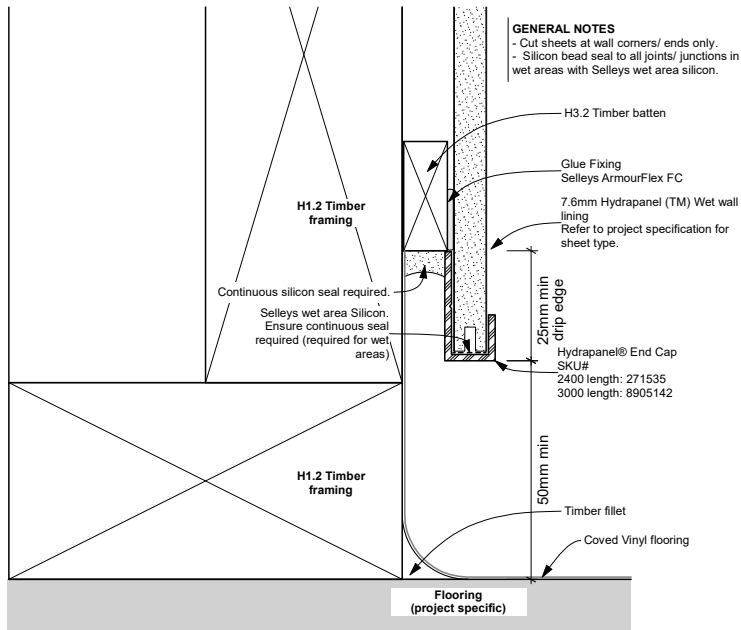
Hydrapanel™ Ceiling Junction

ORIGINAL SHEET SIZE: A4



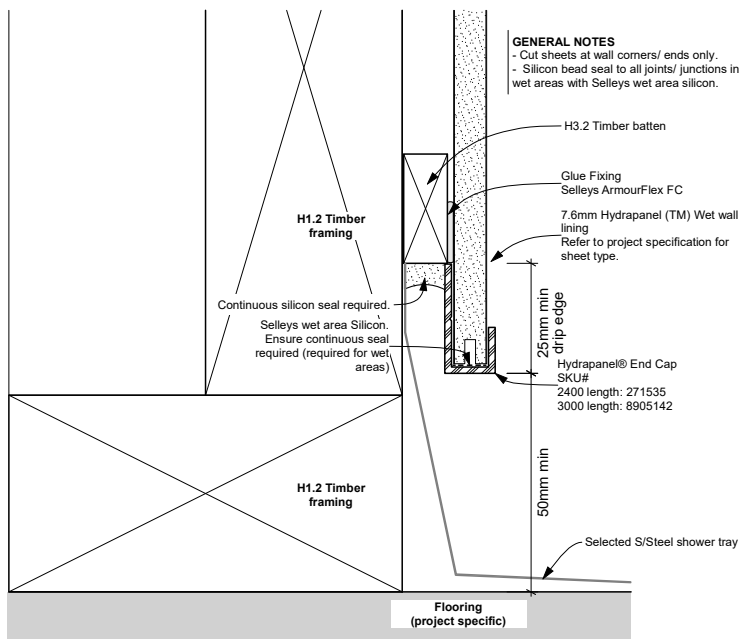
Hydrapanel™ Skirting on concrete floor

ORIGINAL SHEET SIZE: A4



Hydrapanel™ Hydrapanel to covered vinyl floor

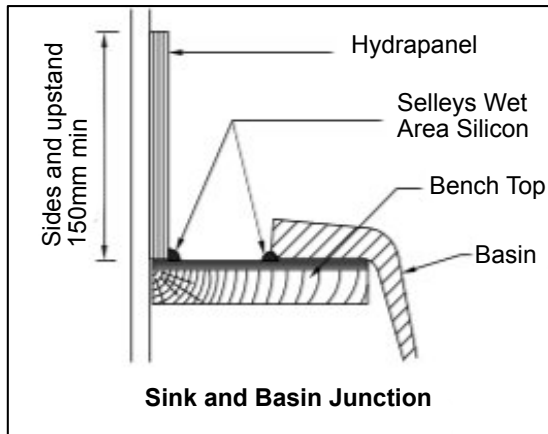
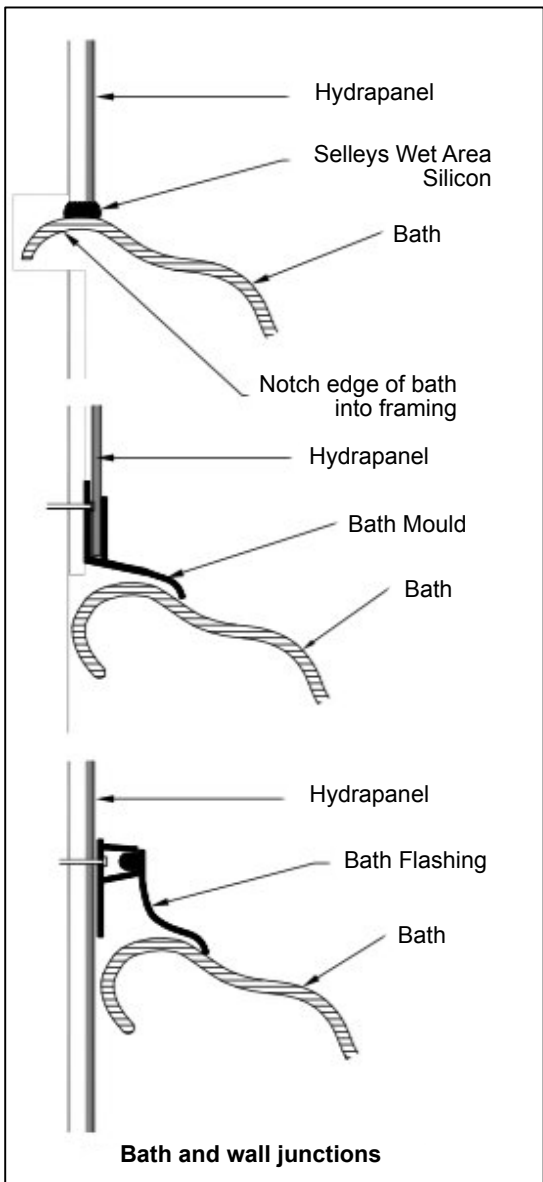
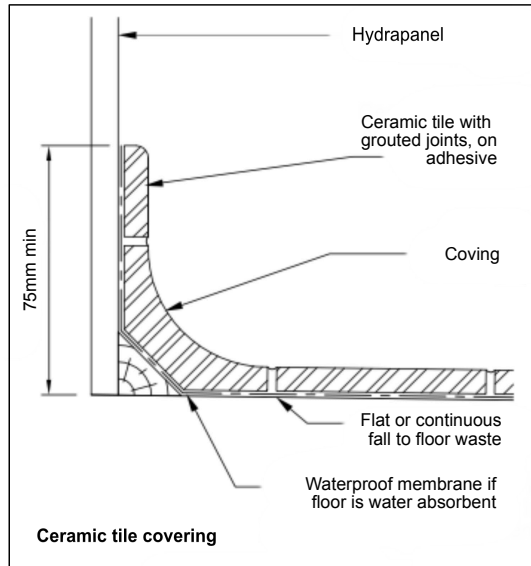
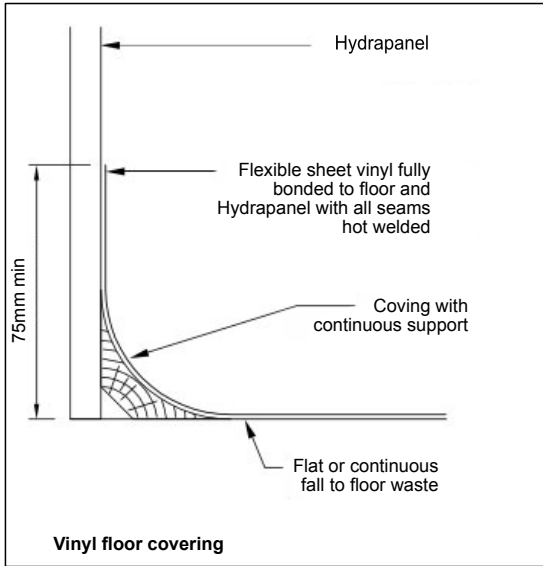
ORIGINAL SHEET SIZE: A4



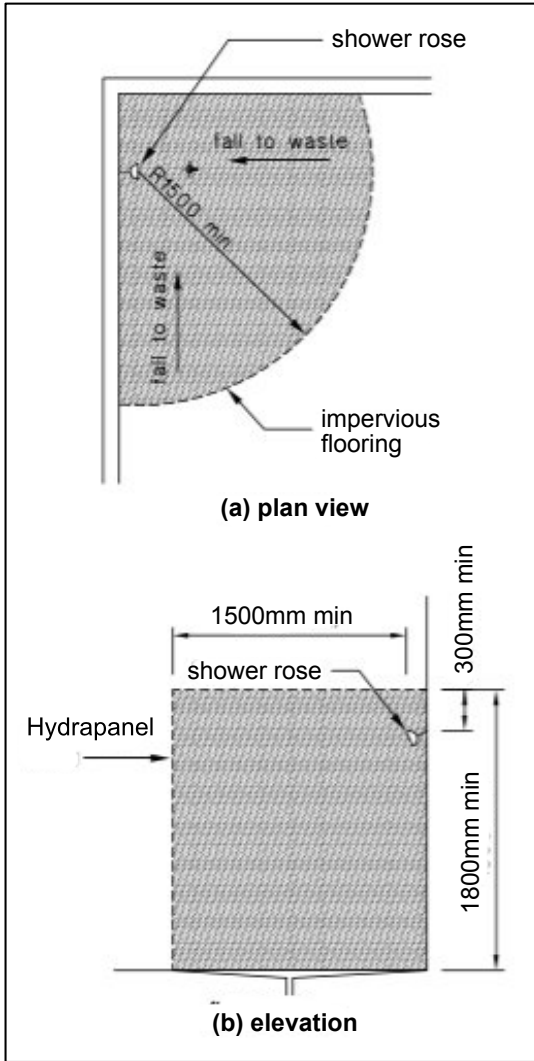
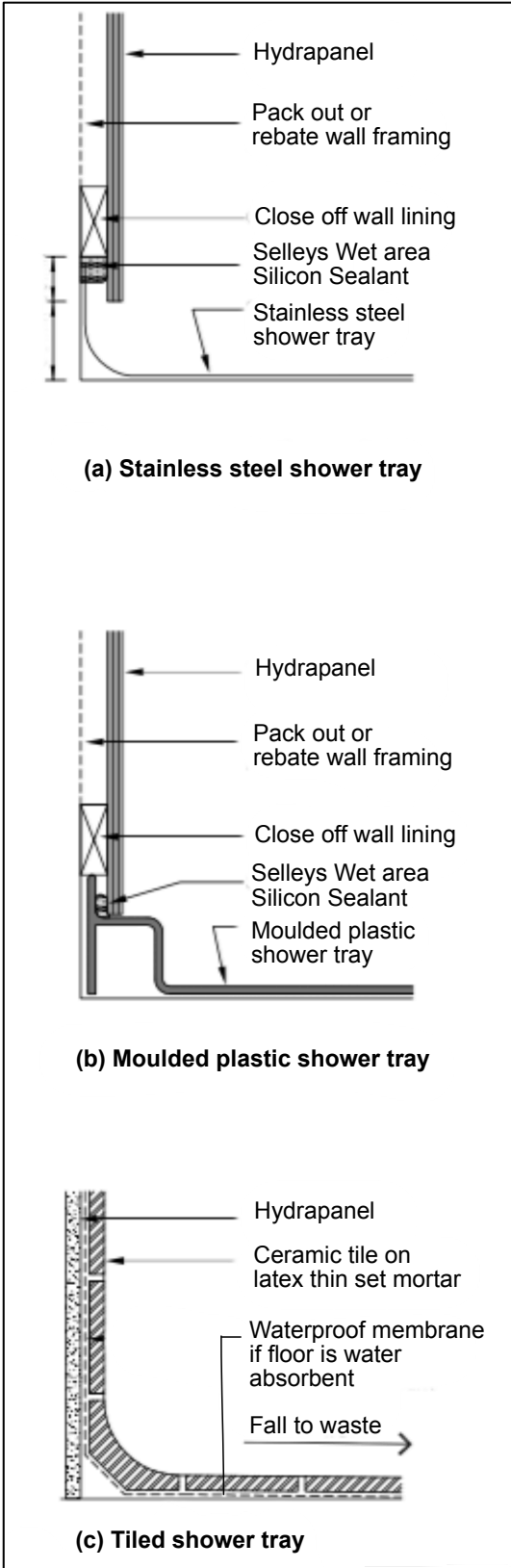
Hydrapanel™ Hydrapanel over S/Steel shower tray

ORIGINAL SHEET SIZE: A4

WET AREA FLOOR COVERINGS, FIXTURES AND FITTINGS



SHOWER TRAYS AND UNENCLOSED SHOWERS



Must be fitted in accordance with the NZBC, Clause E3 Internal moisture

SPLASHBACKS

Hydrapanel Linings are suitable to be used as a splash back behind gas and electric cook tops;

Warning:

For electric cook tops - A distance of at least 100mm must be kept from the outer ring of the nearest heating element.

For gas cook tops - A distance of at least 200mm must be set from the closest outer ring of the hob.

All installations of Hydrapanel must be in accordance with the cook top manufacturers recommendations.



MAINTENANCE

Hydrapanel Linings are moisture resistant panels, however the sheets must be installed and maintained to resist water penetration.

Care must be given to joints and penetrations and these must be maintained to ensure that no water can penetrate to the framing.

Hydrapanel Linings are finished in High Pressure Laminate, the cleaning of HPL should be with non abrasive cloths and non abrasive cleaners such as spray and wipe

To remove stubborn stains and adhesive residues solvent thinners can be used with a cotton cloth. Note; when handling products containing hazardous solvents the following precautions should be taken:

- plastic gloves and glasses to be worn
- keep windows open and aerate the room / area
- do not use around heat sources

STORAGE AND HANDLING OF SHEETS

Long term storage of the sheets must be under cover on evenly spaced bearers (500mm max) to keep them flat and dry.

Outside storage requires panels to be covered with a breathable waterproof material that allows air to circulate around the panel stack.

Panels must be lifted and not dragged off the stack.

PACKAGING AND LABELLING

Panels are protected with a plastic foil membrane attached to the laminate

Panels are packed gloss to matt per pallet / delivery – shrink wrapped with corner protection

On the panels (one side) is a label giving the production number and date of manufacture, this is also the gloss side of the panel

TECHNICAL SPECIFICATION

Finished Panel Specifications and Tolerances

Panel Size	Thickness	Weight	Weight
(mm)	Nominal (mm)	(kg/m ²)	per panel (kg)
2400 x 1200	7.6	8.3	24
3000 x 1200	7.6	8.3	29

Length	±- 1mm
Width	±- 1mm
Thickness	±- 0.2mm
Diagonal	±-1 mm

Substrate Properties

Density	1.0 t/m ³
Moisture Content	8%
Bending Strength	20 MPa
Water Swelling	0.34 %
Dry Shrinkage	0.29%
Impact Strength	8 J/m ²
Screw Withdrawl	80 N/mm

PRODUCT WARRANTY

Hydrapanel Flooring Systems Limited warrants the product, will be free of defects due to factory manufacturing and, subject to condition set out below, will be resistant to delaminating, rotting, cracking, termite damage and fire for a period of 15 years from the date of purchase.

This warranty applies to the first purchaser of the product and is not transferable

Conditions apply

Always follow these instructions when installing Hydrapanel

Hydrawood Flooring Systems Limited
PO Box 47927
Ponsonby
Auckland
New Zealand